

# Cervical Cone Biopsy

## The Cervical Biopsy Blades - designed for the most delicate of operations

A cervical biopsy is a procedure to remove tissue from the cervix to test for abnormal or pre-cancerous conditions, or cervical cancer. The cervix is the lower, narrow part of the uterus. It forms a canal that opens into the vagina.

There are several types of Cervical Biopsy procedures including Endocervical Curettage (ECC), a Punch Biopsy or a Cone Biopsy and they may be used to diagnose various conditions.

The Cervical Biopsy blade is used to diagnose conditions requiring larger sample sizes including but not limited to;

- High grade Cervical intra-epithelial neoplasia (CIN)
- High grade glandular lesions
- Broad based polyp removal

**Swann-Morton**<sup>®</sup>  
SHEFFIELD ENGLAND



**UK  
CA**  
All medical devices comply with the Medical Device Directive, 93/42/EEC as referred by Part 2 of the Medical Devices Regulations 2002. Annex II excluding section 4 (as modified by Part 2 of Schedule 2A to the Medical Devices Regulations 2002).



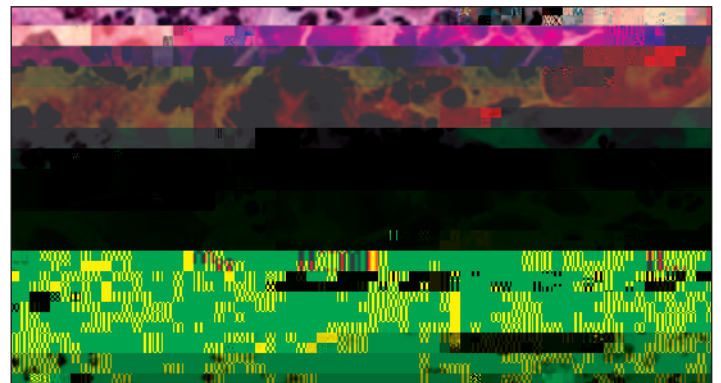
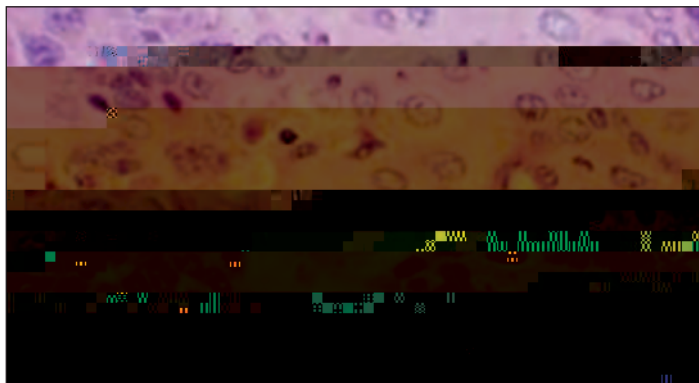
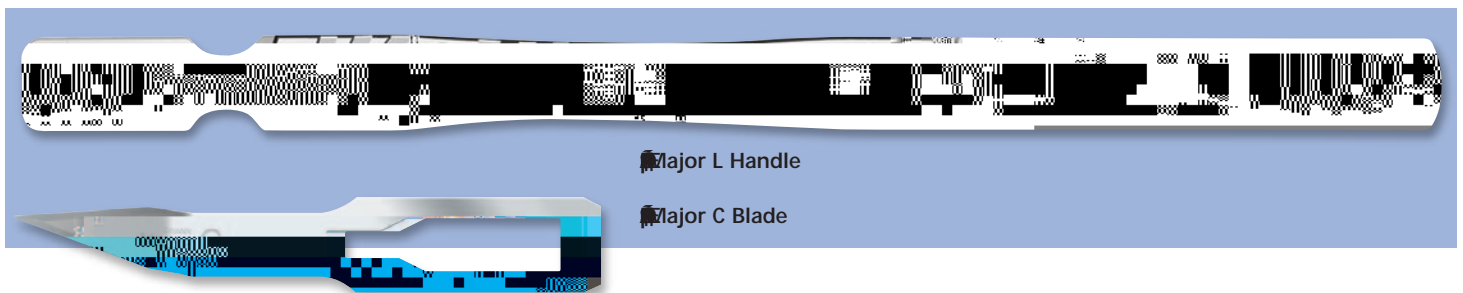
Scan this code for more product information

# Swann-Morton®

ONE OF THE WORLD'S LEADING SURGICAL BLADE MANUFACTURERS

The sterile stainless Cervical Biopsy blade is used in conjunction with the Long Stainless Steel Major Handle to take a "Cone" biopsy from the tissue in a woman's cervix. The unique shape and double cutting edge allow the blade to cut clockwise or anticlockwise.

It is called a cone biopsy because of the "cone-shaped" wedge of abnormal tissue which is removed from high in the cervical canal. A small amount of normal tissue around the cone-shaped wedge of abnormal tissue is also removed so that a margin free of abnormal cells is left in the cervix. The tissue is then sent to the laboratory for microscopic examination to assist with the clinical diagnosis.



Product	Product No	Unit	Product	Product No	Unit
<b>Cervical Biopsy Blades - Sterile</b> Blades in Stainless Steel - Sterile, Individually sealed in a pouch, 10 per unit box			<b>Major Long Handles</b> Handles in Stainless Steel - Non-Sterile, Individually sealed in a packet, 10 per unit box		
<b>Fits Major L handle</b>			<b>Major L handle</b>		
Cervical Biopsy Blades	2001	Box of 10	Major L handle	0640	Box of 10

and the 'ring pattern' logo are registered trademarks of Limited and related companies. The products shown are manufactured for use by trained health care professionals and can cause injury if used or handled incorrectly. The information and illustrations used in connection with the products shown on this leaflet are for general guidance only and users must seek proper training and instruction in their use before using or handling such products. Limited exclude all liability for injury to the extent permitted by law.